

16 SESAME ST MICKLEHAM

3 BED | 2 BATH | 1 CAR



The area



Melbourne CBD

40 minute drive



Craigieburn Central

10 minute drive



Melbourne Airport

20 minute drive



Donnybrook Station

10 minute drive



Hume Freeway

10 minute drive



Northern Hospital

25 minute drive



Craigieburn Secondary School

15 minute drive



Mickleham Primary School

5 minute drive





Mickleham Road



16 Sesame Street



Proposed shopping village



Proposed sports oval



Proposed sporting facilities



Melbourne CBD



Hume Freeway



The property.

16M WIDE CORNER LOT



The residence



A spacious 3 bedroom home, flooded with natural light, situated on a wide corner lot in Mickleham's newest community, Botanical.



The features

- Front landscaping
- Remote operated single garage
- Backyard with storage shed
- Ducted heating
- Evaporative cooling
- Downlights throughout
- Stylish timber laminate flooring (living, kitchen, entry)
- Carpet (bedrooms)
- Roller blinds to all windows



The kitchen

Equipped with 20mm stone bench tops and classic white overhead cupboards & soft close drawers.

Large double bowl stainless steel sink & tapware.

900mm stainless steel rangehood, cooktop & oven. Stainless steel dishwasher.

Stylish subway tile splashback.



The bathrooms

The ensuite and bathroom have been designed with style and durability top of mind.

Features include;

- 20mm stone bench tops
- modern white cupboards
- stylish basins
- stainless steel tapware
- 900x900mm shower



The living & dining

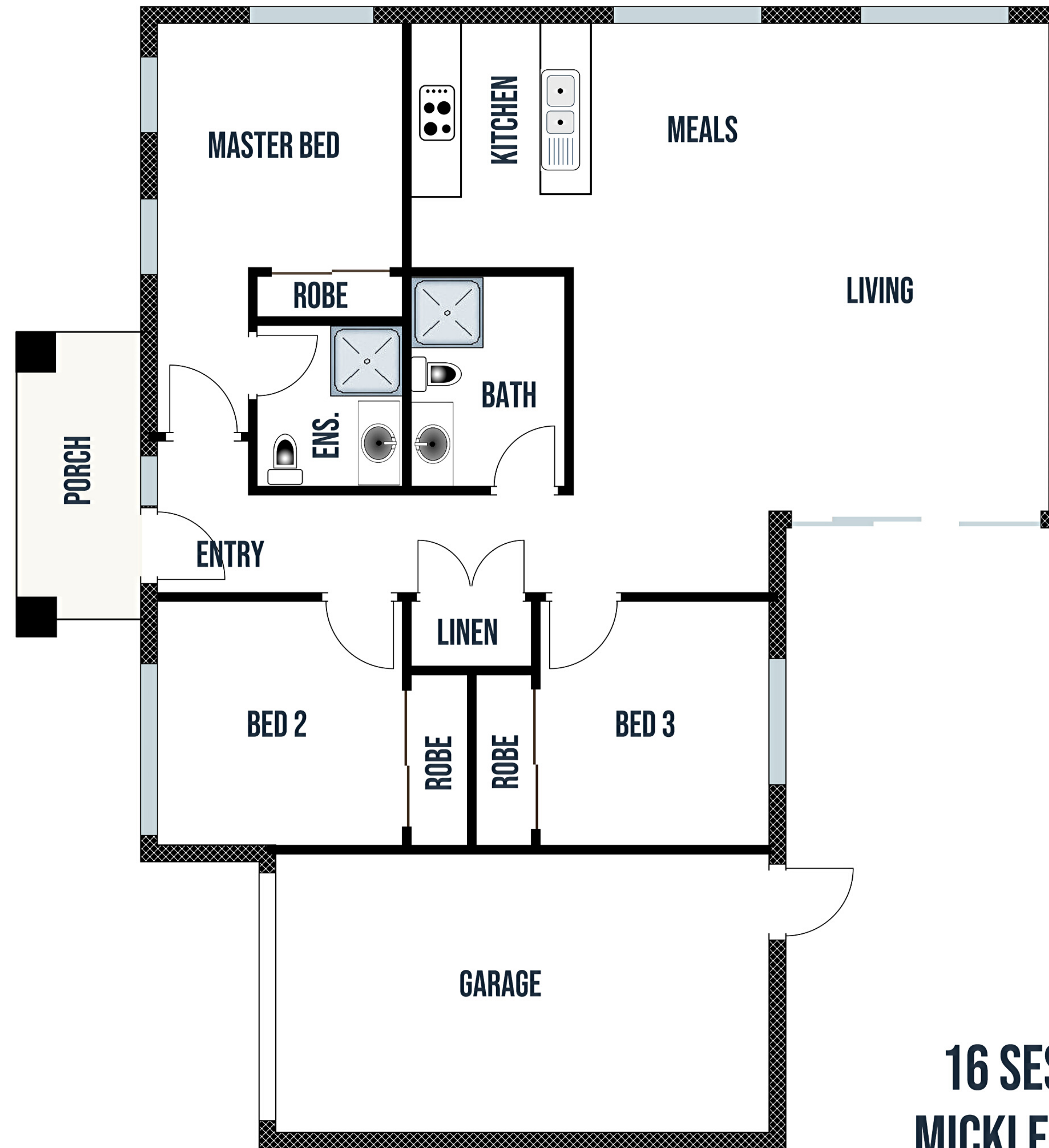
This light-filled, open-plan living, meals and dining space is suitable for the whole family to enjoy. Lit up by a number of downlights & large designer windows.

Guests will notice the statement this timber laminate flooring makes upon entrance, providing a sense of lasting style.

Keep cool in summer and warm in winter with the likes of Ducted Heating and Evaporative Cooling systems that operate throughout the entire home.



The floor plan



**16 SESAME STREET
MICKLEHAM, VIC 3064**

Whilst every attempt has been made to ensure the accuracy of the floor plan contained here, measurements of doors, windows, rooms and any other items are approximate and no responsibility is taken for any error, omission, or mis-statement. This plan is for illustrative purposes only and should be used as such by any prospective purchaser. The services, systems and appliances shown have not been tested and no guarantee as to their operability or efficiency can be given.

The deal

Sale terms

10% deposit on signing an unconditional contract, balance payable 30, 60, or 90 days from the day of sale.

Further documents available (upon request)

Working drawings

Botanical Estate Masterplan

Virtual walk through

Professional photos

